



The Green

, CROXLEY GREEN, WD3 3HT

£1,735 Per Month

Nestled in the heart of Croxley Green, this delightful semi-detached cottage offers a perfect blend of traditional character and modern comfort. Located on The Green, the property boasts beautiful landscaping that is sure to appeal to those seeking a tranquil lifestyle.

Upper and lower floors are divided into two inviting reception rooms, providing ample space for both relaxation and entertaining. These rooms are filled with natural light, creating a warm and inviting atmosphere. Fitted kitchen, mod kit, mod bath.

The cottage features three well-proportioned bedrooms, The exterior of the property is equally charming, with a quaint court yard garden, Croxley Green is known for its friendly community and beautiful surroundings, making it an ideal location for families and individuals alike. With local amenities, parks, and excellent transport links nearby, this property offers both convenience and a sense of community. Available from Middle February 2026

- Semi detached character cottage
- Front & rear reception rooms
- 3 bedrooms, GCH, DG, OSP
- mod kit, mod bath.
- AVAILABLE NOW!

Viewing

Please contact our Grosvenor Estate Agents Ltd Office on 01923 711651

if you wish to arrange a viewing appointment for this property or require further information.



3



1

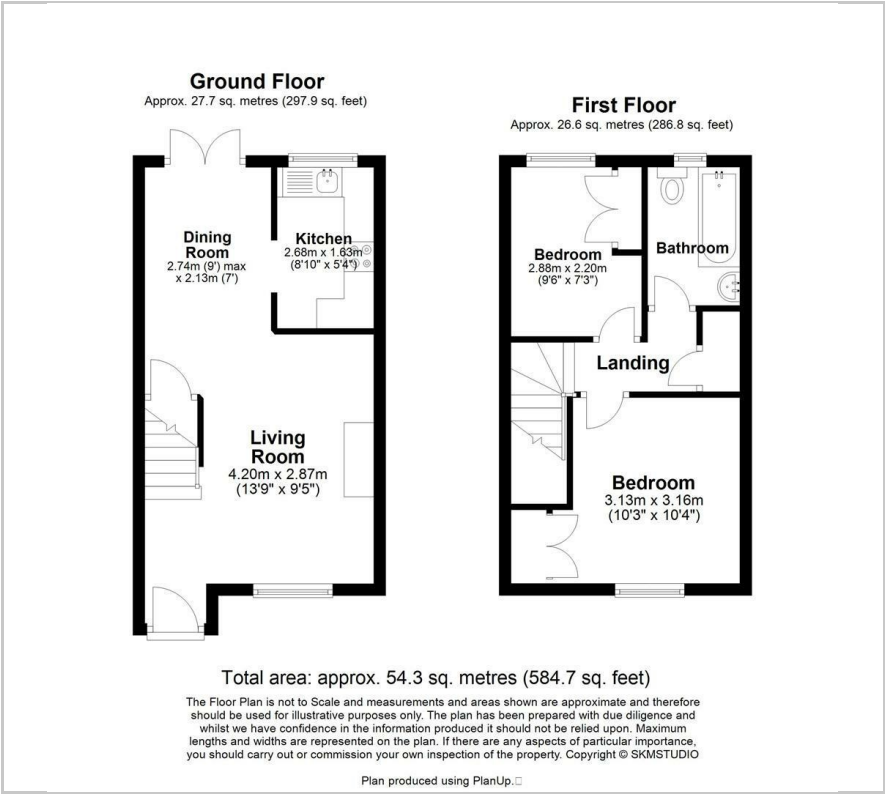


2



G

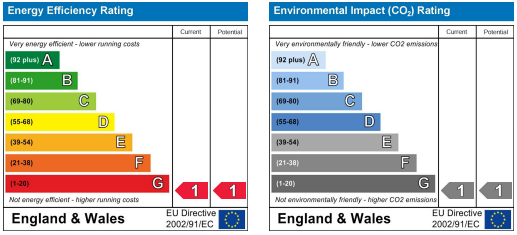
Floor Plan



Area Map



Energy Efficiency Graph



These particulars, whilst believed to be accurate are set out as a general outline only for guidance and do not constitute any part of an offer or contract. Intending purchasers should not rely on them as statements of representation of fact, but must satisfy themselves by inspection or otherwise as to their accuracy. No person in this firms employment has the authority to make or give any representation or warranty in respect of the property.